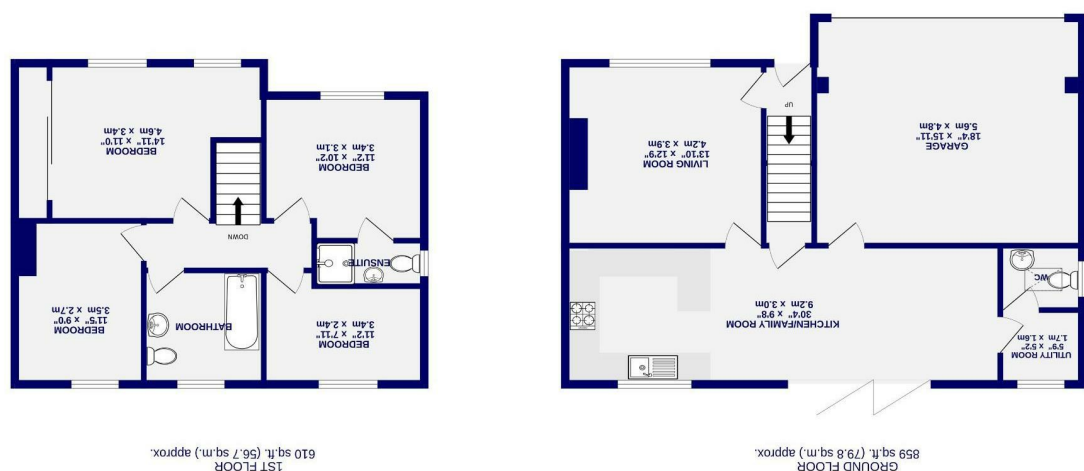


These particulars have been prepared as accurately and as reliably as possible, but should not be relied upon as 'statement of fact'. If there is any point which is of particular importance to you, please contact the office and we would be pleased to check the information. We have not tested any services, appliances, equipment or facilities and nothing in these particulars should be deemed to be a statement that they are in good working order, or that the property is in good structural condition or otherwise. Any areas, measurements, floor plans or distances referred to are given as a guide only and are not precise. Purchasers must satisfy themselves by inspection or by otherwise regarding the items mentioned above and as to the correctness of each of the statements contained in these particulars. No person in the employment of Ashtons has any authority to make or give any representation or warranty whatsoever in relation to this property or these particulars nor enter into any contract relating to the property on behalf of the vendor.

- EPC C
- /Kitchen
- Large Open Plan Living/ Dining
- Double Garage
- Walking Distance York City Centre
- Two Bathrooms
- Four Bedrooms
- House
- Large Extended Semi Detached

Freehold
Council Tax Band - C

Glen Avenue
Heworth, York
YO31 0XN



Glen Avenue
Heworth, York
YO31 0XN

£475,000



A substantially extended and renovated family home, positioned just a short distance from York city centre in the highly sought after area of Heworth, offering excellent access to local amenities, well regarded schools and strong transport links.

The property is entered via a composite door into a welcoming hallway with stairs to the first floor. To the front is a well presented living room, creating a comfortable and cosy space.

A double storey side extension has transformed the ground floor, creating an impressive open plan kitchen dining space. The kitchen offers a range of wall and base units with stylish worktops and a range of integrated and freestanding appliances, with ample space for dining. Bi fold doors open directly onto the rear garden, providing a seamless connection between inside and out. A matching utility room and separate WC sit just off the kitchen.

The property also benefits from an integral double garage with remote controlled roller door, providing secure off street parking or additional storage.

To the first floor are four generous double bedrooms. The principal bedroom sits to the front and includes fitted wardrobes. Two further bedrooms form part of the extension, one benefitting from a modern en suite shower room. A contemporary family bathroom with three piece suite and fully tiled finish completes the accommodation.

Externally, the rear garden has been landscaped for low maintenance, featuring porcelain paving and enclosed boundaries.

A well balanced and modern home in a popular location, early viewing is highly recommended.

